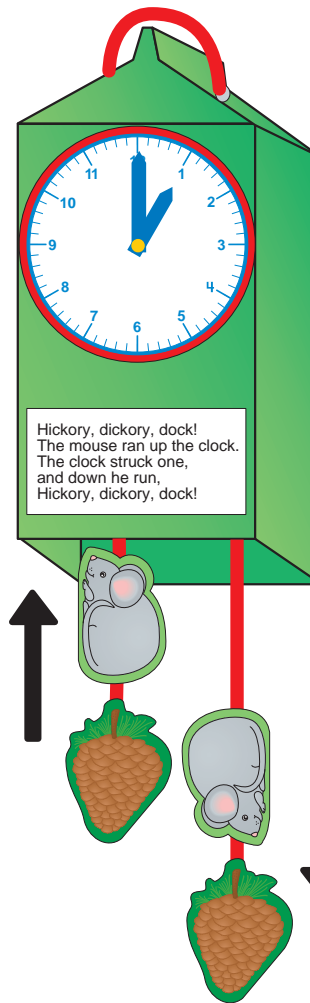


Hickory, Dickory, Dock... Make a moveable clock!




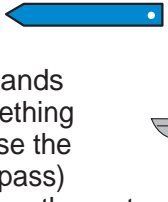
Idea From: Carol Hartery • The Learning Tree • Stoneham MA
 Directions & Artwork By: Susan DeMuth • Shapes Etc.



Directions:

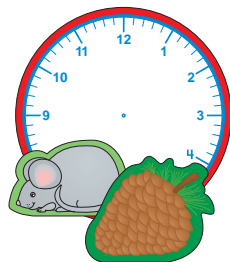
1. Cut out the bottom of an empty juice carton and cover with construction paper.
2. Glue on a sheet of large clock notepad.
3. Cut clock hands, pre punch 1/8" holes for brass fastener and add hands to clock.
4. Poke holes in the top of the carton for yarn.
5. Cut 36" piece of yarn and thread it in the holes so it dangles down.
6. Tape on the mice* and pine cones*
** laminating optional*
7. Glue a copy of the rhyme to the front and pull yarn gently so the mice can run up & down!

Materials:

- Empty Juice (or Milk) Carton
- Glue Stick
- Brass Fastener 
- Yarn - 36"
- Scissors 
- Tape
- Heavy Paper for clock hands
- 1/8" Hole Punch (or, something sharp to poke holes... Use the point of an awl or a compass)
- Construction Paper to cover the carton
- Laminating sheets
- Notepad Sheets:
 - 2 Pine Cones* Mini SE-691
 - 2 Mice* Mini SE-789
 - 1 Clock* Large SE-84
** laminating optional*

Variations:


- Use real pine cones

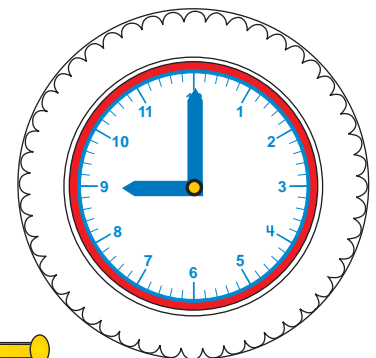


Complimentary Activity:

Make Individual Student Clocks

Materials:

- Scissors
- Tape
- Glue Stick
- Brass Fastener 
- 9" Paper Plate
- Large Clock Notepad SE-84
- 1/8" Hole Punch or something sharp to poke a hole...The point of an awl, compass or knitting needle will work.



Hickory, dickory, dock!
 The mouse ran up the clock.
 The clock struck one,
 and down he run,
 Hickory, dickory, dock!

pattern for nursery rhyme

patterns for clock hands

